

PROJECT INFORMATION

SUN PRAIRIE
ELEMENTARY
SCHOOL - BUILDING B

(THOMPSON ROAD
SITE)

ISSUANCE AND REVISIONS

DATE	DESCRIPTION
04/28/2017	BID PACKAGE #1

KEY PLAN



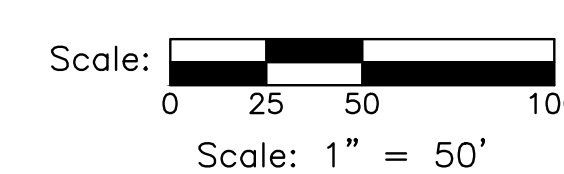
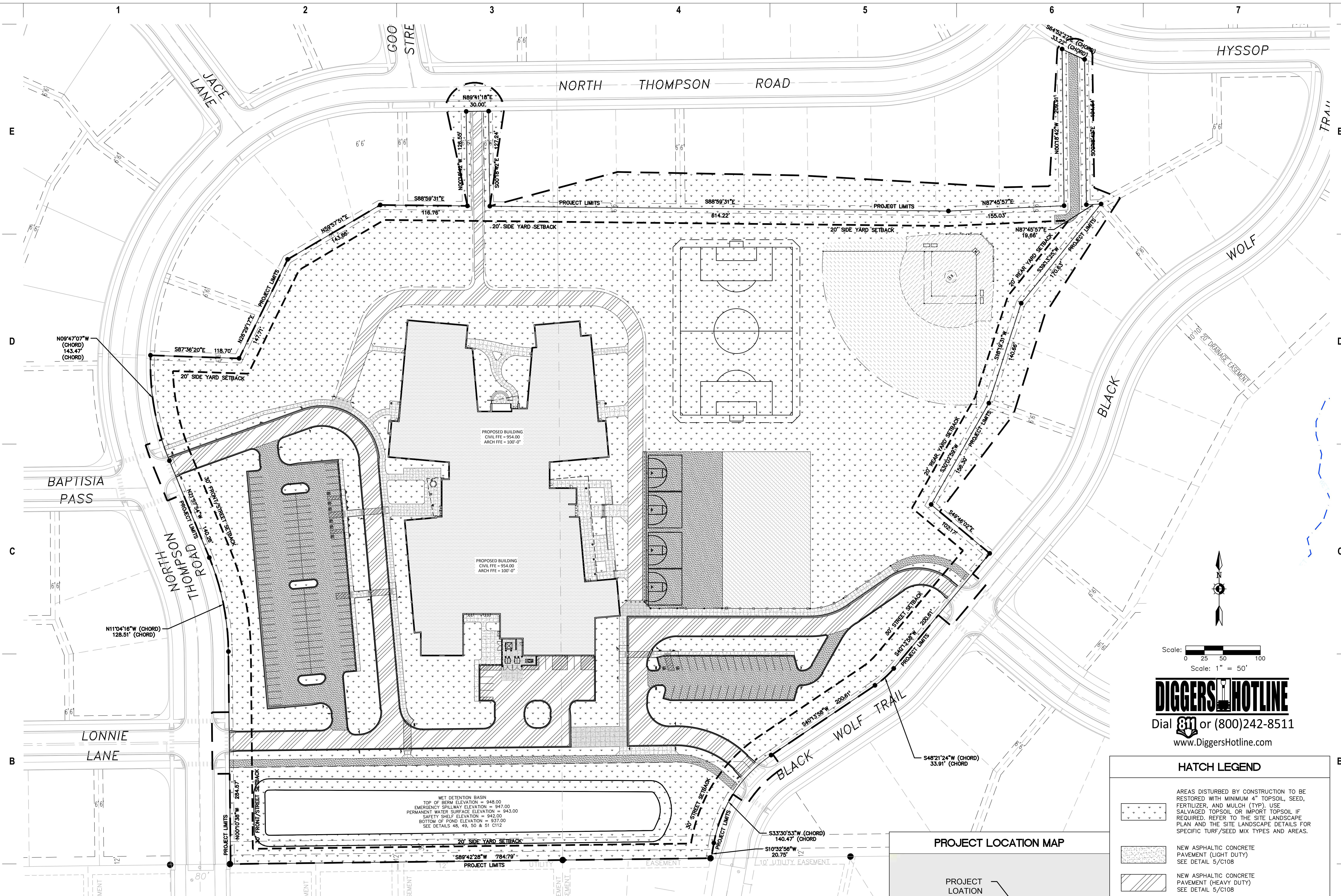
KAPUR & ASSOCIATES, INC.
CONSULTING ENGINEERS
7711 N. PORT WASHINGTON ROAD
MILWAUKEE, WISCONSIN 53217
Phone: 414.351.6666 Fax: 414.351.4117
www.kapurengineers.com

SHEET INFORMATION

PROJECT MANAGER JG
PROJECT NUMBER 316451-01

OVERALL SITE PLAN

C102



DIGGERSHOTLINE
Dial 811 or (800)242-8511
www.DiggersHotline.com

HATCH LEGEND

- AREAS DISTURBED BY CONSTRUCTION TO BE RESTORED WITH MINIMUM 4" TOPSOIL, SEED, FERTILIZER, AND MULCH (TYP). USE SALVAGED TOPSOIL OR IMPORT TOPSOIL IF REQUIRED. REFER TO THE SITE LANDSCAPE PLAN AND THE SITE LANDSCAPE DETAILS FOR SPECIFIC TURF/SEED MIX TYPES AND AREAS.
- NEW ASPHALTIC CONCRETE PAVEMENT (LIGHT DUTY) SEE DETAIL 5/C108
- NEW ASPHALTIC CONCRETE PAVEMENT (HEAVY DUTY) SEE DETAIL 5/C108
- NEW LIGHT DUTY CONCRETE SLAB SEE DETAILS 6 & 7/C108
- NEW HEAVY DUTY CONCRETE SLAB SEE DETAILS 6 & 7/C108
- NEW SOFT SURFACE PLAYGROUND AREA
- NEW 18" BARRIER HIGH-SIDE CONCRETE CURB & GUTTER UNLESS OTHERWISE NOTED SEE DETAILS 8, 9, 10, 11 & 12/C108
- NEW 18" BARRIER LOW-SIDE CONCRETE CURB & GUTTER UNLESS OTHERWISE NOTED SEE DETAILS 8, 9, 10, 11 & 12/C108
- NEW 6" HIGH AMERISTAR MONTAGE PLUS 3-RAIL MAESTIC (OR EQUIVALENT) WELDED ORNAMENTAL STEEL FENCE SEE DETAILS 31 & 32/C110

PROJECT LOCATION MAP



PROPERTY AND BUILDING INFORMATION	
A. LOT AREA	830,740 SQ. FT. (19.071 AC.)
B. FLOOR AREA	92,259 SQ. FT. (2,118 AC.)
C. FLOOR AREA RATIO (B/A)	92,259 / 830,740 = 0.111
D. PAVED AREA	204,672 SQ. FT. (4.699 AC.)
E. IMPERVIOUS SURFACE AREA	296,931 SQ. FT. (6.817 AC.)
F. IMPERVIOUS SURFACE RATIO (E/A)	296,931 / 830,740 = 0.357
G. BUILDING HEIGHT	36' - 4"

LEGAL DESCRIPTION: Part of the SW ¼ of the NE ¼ and the SE ¼ of the NE ¼, Section 36, Town 09 North, Range 10 East, City of Sun Prairie, Dane County, Wisconsin, described as follows:

COMMENCING at the East Quarter Corner of Section 36;
 thence S89°42'28"W, 1050.45 feet (recorded as S89°18'32"W, 1050.65 feet) along the south line of the NE ¼ of Section 36 and the north line of Ridge Crest to the northwest corner of Lot 95 said Ridge Crest and the POINT OF BEGINNING;
 thence continuing S89°42'28"W, 784.79 feet (recorded as S89°18'32"W & S89°18'55"W, 784.61 feet) along the south line of the NE ¼ of Section 36 and the north line of Ridge Crest and Shonas Highlands to the northeast corner of Lot 152 said Shonas Highlands;
 thence N00°10'38"W, 284.74 feet to a point of curvature;
 thence along the arc of said curve to the left with a central angle of 21°47'16", a radius of 260.00 feet and a long chord of N11°04'16"W, 98.27 feet;
 thence N21°57'54"W, 80.49 feet; thence N15°58'54"W, 119.79 feet to a point of curvature of a non-tangent curve;
 thence along the arc of said curve to the right with a central angle of 15°59'10", a radius of 413.00 feet and a long chord of N04°37'19"W, 114.86 feet to a point of non-tangency;
 thence N87°36'20"E, 188.45 feet; thence N26°29'17"E, 147.71 feet; thence N59°57'51"E, 143.86 feet; thence S88°59'31"E, 116.76 feet; thence N00°18'42"W, 126.55 feet; thence N89°41'18"E, 30.00 feet;
 thence S00°18'42"E, 127.24 feet; thence S88°59'31"E, 614.22 feet; thence N87°45'57"E, 155.03 feet; thence N00°18'42"W, 209.91 feet to a point of curvature of a non-tangent curve;
 thence along the arc of said curve to the left with a central angle of 06°48'06", a radius of 280.00 feet and a long chord of S64°52'27"E, 33.22 feet to a point of non-tangency;
 thence S00°18'42"E, 194.64 feet; thence N87°45'57"E, 19.66 feet; thence S39°13'25"W, 170.63 feet; thence S18°19'31"W, 140.66 feet; thence S30°02'59"W, 156.30 feet; thence S49°46'02"E, 162.17 feet;
 thence S40°13'58"W, 200.61 feet to a point of curvature;
 thence along the arc of said curve to the right with a central angle of 16°14'52", a radius of 180.00 feet and a long chord of S48°21'24"W, 50.87 feet;
 thence S56°28'50"W, 167.54 feet to a point of curvature;
 thence along the arc of said curve to the left with a central angle of 45°55'54", a radius of 120.00 feet and a long chord of S33°30'53"W, 93.64 feet;
 thence S10°32'56"W, 9.26 feet to the POINT OF BEGINNING.
 Containing 917,600 square feet (21.07 acres). Subject to all recorded and unrecorded easements.

1

2

3

4

5

6

7

KEYNOTES PER SHEET



eppstein uhen : architects

milwaukee 333 East Chicago Street
Milwaukee, Wisconsin 53202
telephone 414.271.5350
madison 309 West Johnson Street, Suite 202
Madison, Wisconsin 53703
telephone 608.442.5350

PROJECT INFORMATION

SUN PRAIRIE
ELEMENTARY
SCHOOL - BUILDING
B

(THOMPSON ROAD
SITE)

ISSUANCE AND REVISIONS

DATE	DESCRIPTION
04/28/2017	BID PACKAGE #1

KEY PLAN

SHEET INFORMATION

**PROGRESS DOCUMENTS
NOT FOR CONSTRUCTION**

These documents reflect progress and intent and may be subject to change, including additional detail. These are not final construction documents and should not be used for final bidding or construction-related purposes.

PROJECT MANAGER JG

PROJECT NUMBER 316451-01

EXTERIOR
ISOMETRICS
(BUILDING B)

A200.B

© Eppstein Uhen Architects, Inc.

E

D

C

B

A

E

D

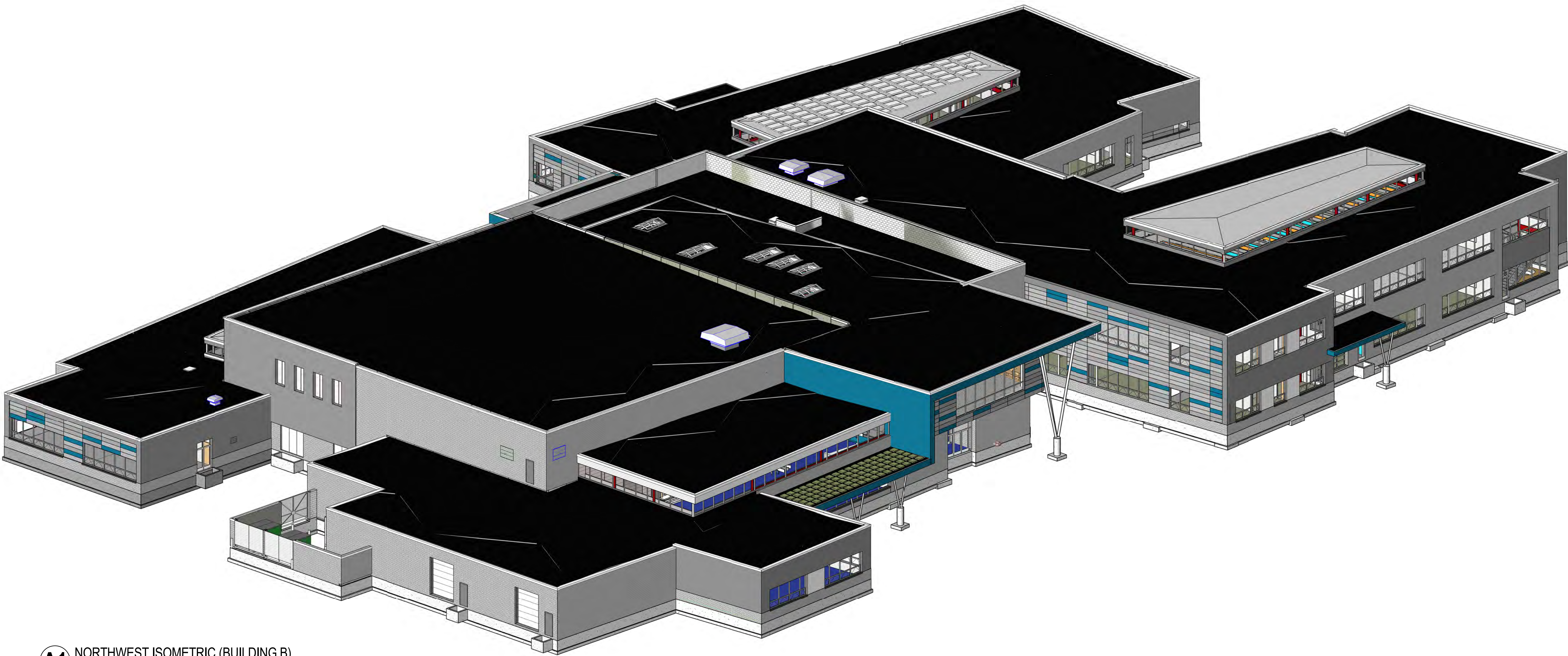
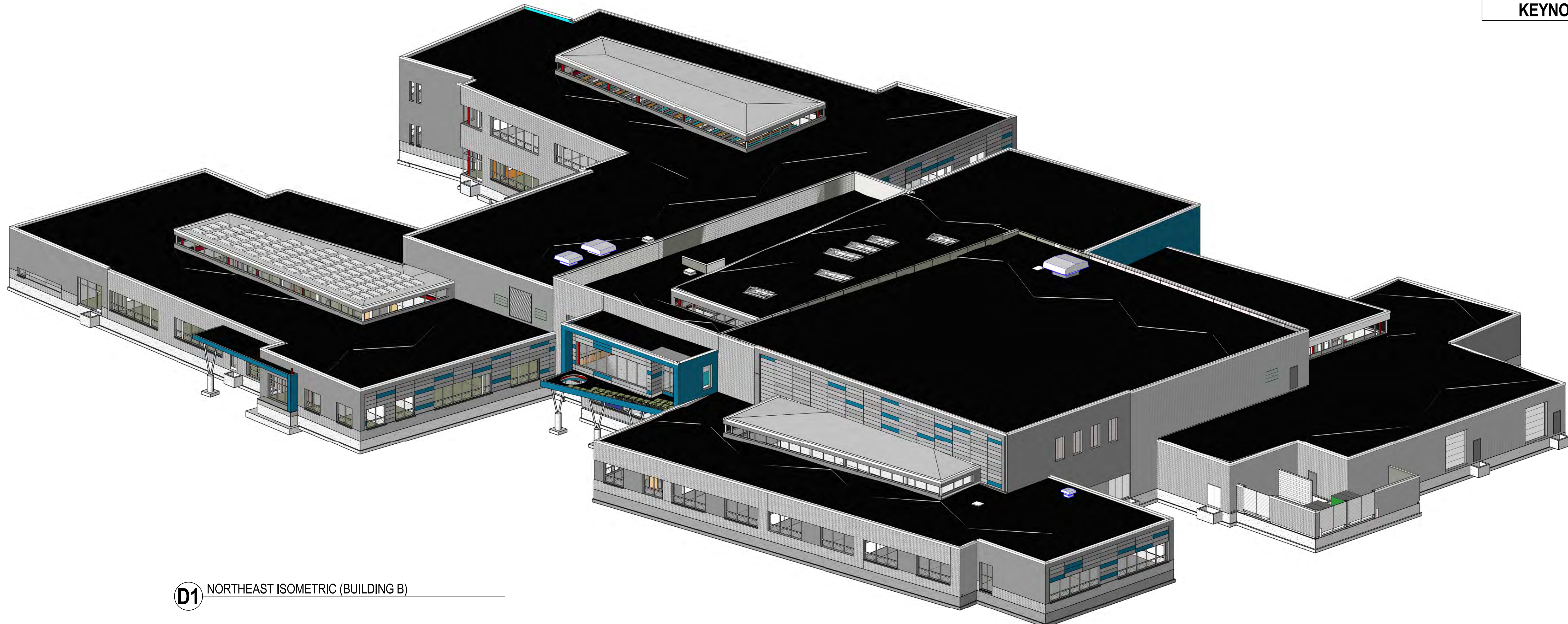
C

B

A

D1 NORTHEAST ISOMETRIC (BUILDING B)

A1 NORTHWEST ISOMETRIC (BUILDING B)



1 2 3 4 5 6 7

KEYNOTES PER SHEET



eppstein uhen : architects

milwaukee 333 East Chicago Street
Milwaukee, Wisconsin 53202
telephone 414.271.5350
E madison 309 West Johnson Street, Suite 202
Madison, Wisconsin 53703
telephone 608.442.5350

PROJECT INFORMATION

SUN PRAIRIE
ELEMENTARY
SCHOOL - BUILDING
B

(THOMPSON ROAD
SITE)

ISSUANCE AND REVISIONS

DATE	DESCRIPTION
04/28/2017	BID PACKAGE #1

KEY PLAN

SHEET INFORMATION

**PROGRESS DOCUMENTS
NOT FOR CONSTRUCTION**
These documents reflect progress and intent and may be subject to change, including additional detail. These are not final construction documents and should not be used for final bidding or construction-related purposes.

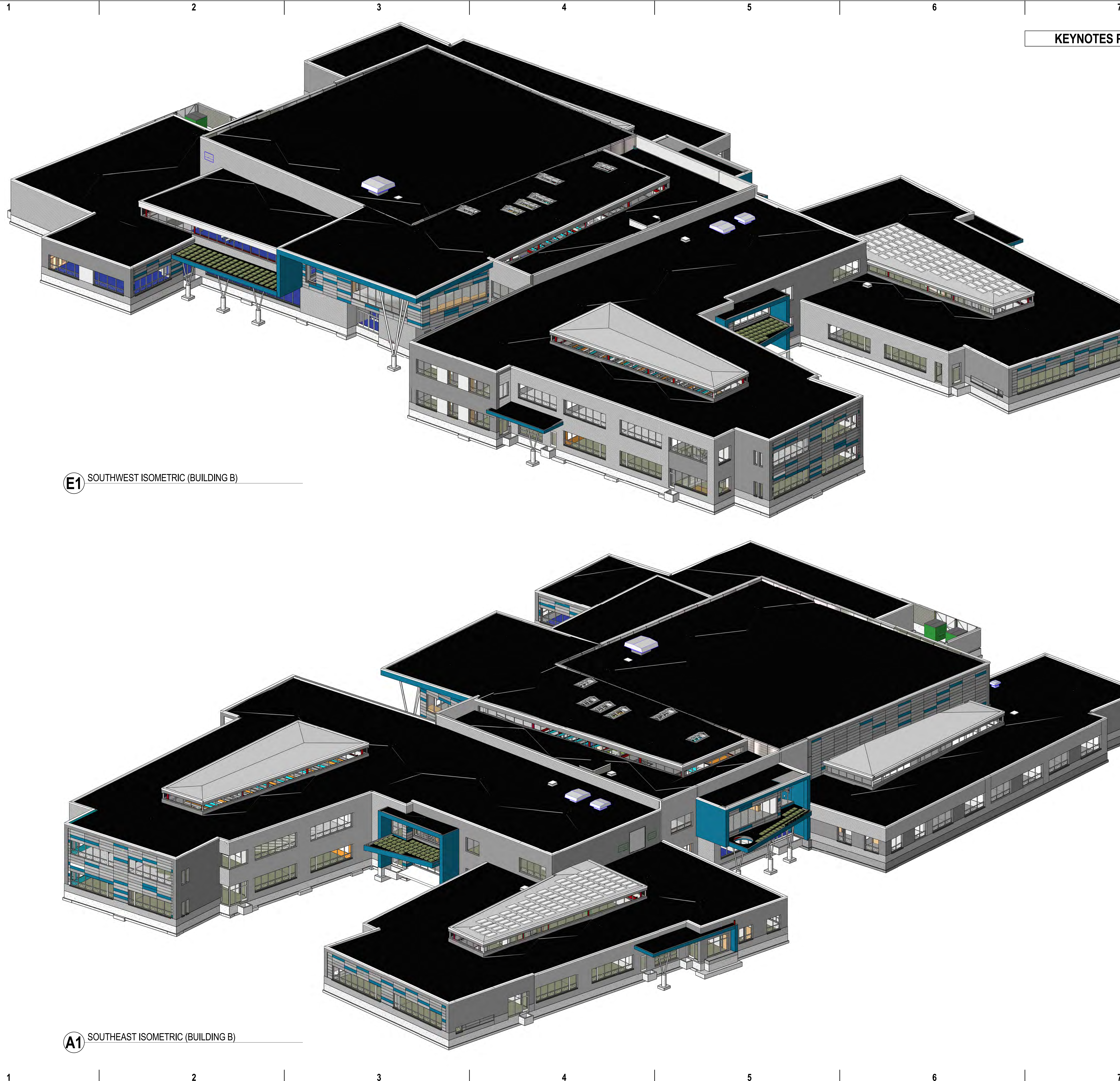
PROJECT MANAGER JG

PROJECT NUMBER 316451-01

EXTERIOR
ISOMETRICS
(BUILDING B)

A201.B

© Eppstein Uhen Architects, Inc.



E1 SOUTHWEST ISOMETRIC (BUILDING B)

A1 SOUTHEAST ISOMETRIC (BUILDING B)

E
D
C
B
A

E
D
C
B
A

1 2 3 4 5 6 7